

Industrial Hose Tails and Adaptors

1,2	Male Hosetail BSPT, BSPP, NPT, Metric		8	Shoulderless Bush BSPP	
3	Male Lugged Fitting Male and Female		8	Bulkhead Connector BSPP/Metric	
3	Female Hosetail 60 Coned, Flat seat, Fixed		9	Sockets BSPP/NPT/Metric	
3	Metric Compression Hosetail		10	Plugs Caps & Lock Nuts	
4	Soldering Nut & Nipple		10	Hexagonal Plug BSPT, BSPP, NPT, Metric	
4	Male 90 deg Hosetail BSPT, BSPP		10	Flanged Plug BSPP	
4	Female 90 deg Hosetail Coned & Flat seat		11	Square Headed Plug BSPP	
4	Hose Repair Connector		11	Allen Key Plug BSPT, Metric, NPT	
5	Lugged Hose Repair Connector		11	Air Vents - Manually Operated	
5	Tee, Y, Tee Hose Repair Connector		12	Female Cap BSPP	
5	Metric Stand Pipe		12	Locknut BSPP, NPT, Metric	
5,6,7	Nipple /Connectors BSPT/BSPP/NPT/Metric		12	Flanged Back Nut BSPP	
6	Bulkhead Connector Coned		12,13,14,15	Elbow, TEE, Cross, Y - BSP, NPT, Metric	
6	Equal Barrel Nipple BSPT		15,16	Manifold Block	
6	Breakable Joint BSPT		16	Oxy-Acetylene Fittings	
8	Bushes BSPT/BSPP/NPT/Metric				

Product ▶ Hosetails BSPT/BSPP/NPT/Metric

Male Hosetail BSPT



Part Number	BSPT Male	Hosetail
MH02/02	1/8"	1/8" (3)
MH02/03	1/8"	3/16" (5)
MH02/04	1/8"	1/4" (6)
MH02/05	1/8"	5/16" (8)
MH02/06	1/8"	3/8" (10)
MH02/08	1/8"	1/2" (12)
MH04/02	1/4"	1/8" (3)
MH04/03	1/4"	3/16" (5)
MH04/04	1/4"	1/4" (6)
MH04/05	1/4"	5/16" (8)
MH04/06	1/4"	3/8" (10)
MH04/08	1/4"	1/2" (12)
MH04/10	1/4"	5/8" (16)
MH04/12	1/4"	3/4" (19)
MH06/03	3/8"	3/16" (5)
MH06/04	3/8"	1/4" (6)
MH06/05	3/8"	5/16" (8)
MH06/06	3/8"	3/8" (10)
MH06/08	3/8"	1/2" (12)
MH06/10	3/8"	5/8" (16)
MH06/12	3/8"	3/4" (19)
MH08/03	1/2"	3/16" (5)
MH08/04	1/2"	1/4" (6)
MH08/05	1/2"	5/16" (8)
MH08/06	1/2"	3/8" (10)
MH08/08	1/2"	1/2" (12)
MH08/10	1/2"	5/8" (16)
MH08/12	1/2"	3/4" (19)
MH08/16	1/2"	1" (25)
MH10/10	5/8"	5/8" (16)
MH12/04	3/4"	1/4" (6)
MH12/05	3/4"	5/16" (8)
MH12/06	3/4"	3/8" (10)
MH12/08	3/4"	1/2" (12)
MH12/10	3/4"	5/8" (16)
MH12/12	3/4"	3/4" (19)
MH12/16	3/4"	1" (25)
MH12/20	3/4"	1.1/4" (32)
MH16/08	1"	1/2" (12)
MH16/10	1"	5/8" (16)
MH16/12	1"	3/4" (19)
MH16/16	1"	1" (25)
MH16/20	1"	1.1/4" (32)
MH16/24	1"	1.1/2" (38)
MH20/12	1.1/4"	3/4" (19)
MH20/16	1.1/4"	1" (25)
MH20/20	1.1/4"	1.1/4" (32)
MH20/24	1.1/4"	1.1/2" (38)
MH24/20	1.1/2"	1.1/4" (32)
MH24/24	1.1/2"	1.1/2" (38)
MH24/32	1.1/2"	2" (50)
MH32/24	2"	1.1/2" (38)
MH32/32	2"	2" (50)
MH40/40	2.1/2"	2.1/2" (63)
MH48/48	3"	3" (75)

Male Hosetail BSPT - Nickel Plated



Part Number	BSPT Male	Hosetail
MH02/02NP	1/8"	1/8" (3)
MH02/03NP	1/8"	3/16" (5)
MH02/04NP	1/8"	1/4" (6)
MH02/05NP	1/8"	5/16" (8)
MH02/06NP	1/8"	3/8" (10)
MH02/08NP	1/8"	1/2" (12)
MH04/02NP	1/4"	1/8" (3)
MH04/03NP	1/4"	3/16" (5)
MH04/04NP	1/4"	1/4" (6)
MH04/05NP	1/4"	5/16" (8)
MH04/06NP	1/4"	3/8" (10)
MH04/08NP	1/4"	1/2" (12)
MH04/10NP	1/4"	5/8" (16)
MH04/12NP	1/4"	3/4" (19)
MH06/03NP	3/8"	3/16" (5)
MH06/04NP	3/8"	1/4" (6)
MH06/05NP	3/8"	5/16" (8)
MH06/06NP	3/8"	3/8" (10)
MH06/08NP	3/8"	1/2" (12)
MH06/10NP	3/8"	5/8" (16)
MH06/12NP	3/8"	3/4" (19)
MH08/03NP	1/2"	3/16" (5)
MH08/04NP	1/2"	1/4" (6)
MH08/05NP	1/2"	5/16" (8)
MH08/06NP	1/2"	3/8" (10)
MH08/08NP	1/2"	1/2" (12)
MH08/10NP	1/2"	5/8" (16)
MH08/12NP	1/2"	3/4" (19)
MH08/16NP	1/2"	1" (25)
MH12/04NP	3/4"	1/4" (6)
MH12/05NP	3/4"	5/16" (8)
MH12/06NP	3/4"	3/8" (10)
MH12/08NP	3/4"	1/2" (12)
MH12/10NP	3/4"	5/8" (16)
MH12/12NP	3/4"	3/4" (19)
MH12/16NP	3/4"	1" (25)
MH16/08NP	1"	1/2" (12)
MH16/10NP	1"	5/8" (16)
MH16/12NP	1"	3/4" (19)
MH16/16NP	1"	1" (25)
MH16/20NP	1"	1.1/4" (32)
MH16/24NP	1"	1.1/2" (38)
MH20/12NP	1.1/4"	3/4" (19)
MH20/16NP	1.1/4"	1" (25)
MH20/20NP	1.1/4"	1.1/4" (32)
MH20/24NP	1.1/4"	1.1/2" (38)
MH24/20NP	1.1/2"	1.1/4" (32)
MH24/24NP	1.1/2"	1.1/2" (38)
MH24/32NP	1.1/2"	2" (50)
MH32/24NP	2"	1.1/2" (38)
MH32/32NP	2"	2" (50)



We can manufacture any fittings as per your drawings / requirements

Male Hosetail BSPT - Nickel Plated



Part Number	BSPT Male	Hosetail
MHA02/06MMNP	1/8"	6
MHA02/07MMNP	1/8"	7
MHA02/08MMNP	1/8"	8
MHA02/10MMNP	1/8"	10
MHA04/06MMNP	1/4"	6
MHA04/07MMNP	1/4"	7
MHA04/08MMNP	1/4"	8
MHA04/10MMNP	1/4"	10
MHA04/12MMNP	1/4"	12
MHA06/10MMNP	3/8"	10
MHA06/12MMNP	3/8"	12
MHA06/14MMNP	3/8"	14
MHA06/16MMNP	3/8"	16
MHA06/17MMNP	3/8"	17
MHA06/20MMNP	3/8"	20
MHA08/10MMNP	1/2"	10
MHA08/11MMNP	1/2"	12
MHA08/12MMNP	1/2"	14
MHA08/16MMNP	1/2"	16
MHA08/17MMNP	1/2"	17
MHA08/20MMNP	1/2"	20
MHA12/16MMNP	3/4"	16
MHA12/20MMNP	3/4"	20
MHA12/25MMNP	3/4"	25
MHA16/25MMNP	1"	25

Male Hosetail BSPT - Nickel Plated



Part Number	BSPT Male	Hosetail
MC3/8-10	3/8"	10
MC3/8-13	3/8"	13
MC1/2-10	1/2"	10
MC1/2-13	1/2"	13
MC1/2-16	5/8"	16
MC3/4-13	3/4"	13
MC3/4-16	3/4"	16
MC3/4-19	3/4"	19
MC1-25	1"	25



Cannot see the size or style you want? Please call us

Male Hosetail BSPT (Fulham)



NPA

Part Number	BSPT Male	Hosetail
MHF04/06	1/4"	3/8" (10)
MHF06/06	3/8"	3/8" (10)
MHF08/06	1/2"	3/8" (10)

Male Hosetail BSPT - Steel



ZP

Part Number	BSPT Male	Hosetail
SMH04/03	1/4"	3/16" (5)
SMH04/04	1/4"	1/4" (6)
SMH04/05	1/4"	5/16" (8)
SMH04/06	1/4"	3/8" (10)
SMH04/08	1/4"	1/2" (12)
SMH06/04	3/8"	1/4" (6)
SMH06/05	3/8"	5/16" (8)
SMH06/06	3/8"	3/8" (10)
SMH06/08	3/8"	1/2" (12)
SMH08/06	1/2"	3/8" (10)
SMH08/08	1/2"	1/2" (12)
SMH12/08	3/4"	1/2" (12)
SMH12/12	3/4"	3/4" (19)
SMH12/16	3/4"	1" (25)
SMH16/16	1"	1" (25)

Male Hosetail BSPT Swivel - 2 Piece



SP

Part Number	BSPT Male	Hosetail
MH04/04S	1/4"	1/4"
MH06/06S	3/8"	3/8"

Combination Nipple BSPT Steel



ZP

Part Number	BSPT Male	Hosetail
CMH08/08	1/2"	1/2" (12)
CMH12/12	3/4"	3/4" (19)
CMH16/16	1"	1" (25)
CMH20/20	1.1/4"	1.1/4" (32)
CMH24/24	1.1/2"	1.1/2" (38)
CMH32/32	2"	2" (50)
CMH40/40	2.1/2"	2.1/2" (63)
CMH48/48	3"	3" (75)
CMH64/64	4"	4" (100)

Male Hosetail BSPP



NPA

Part Number	BSPP Male	Hosetail
MHP02/02	1/8"	1/8" (3)
MHP02/03	1/8"	3/16" (5)
MHP02/04	1/8"	1/4" (6)
MHP02/05	1/8"	5/16" (8)
MHP02/06	1/8"	3/8" (10)
MHP04/03	1/4"	3/16" (5)
MHP04/04	1/4"	1/4" (6)
MHP04/05	1/4"	5/16" (8)
MHP04/06	1/4"	3/8" (10)
MHP04/08	1/4"	1/2" (12)
MHP06/04	3/8"	1/4" (6)
MHP06/05	3/8"	5/16" (8)
MHP06/06	3/8"	3/8" (10)
MHP06/08	3/8"	1/2" (12)
MHP06/10	3/8"	5/8" (16)
MHP06/12	3/8"	3/4" (19)
MHP08/04	1/2"	1/4" (6)
MHP08/05	1/2"	5/16" (8)
MHP08/06	1/2"	3/8" (10)
MHP08/08	1/2"	1/2" (12)
MHP08/10	1/2"	5/8" (16)
MHP08/12	1/2"	3/4" (19)
MHP08/16	1/2"	1" (25)
MHP12/04	3/4"	1/4" (6)
MHP12/05	3/4"	5/16" (8)
MHP12/06	3/4"	3/8" (10)
MHP12/08	3/4"	1/2" (12)
MHP12/10	3/4"	5/8" (16)
MHP12/12	3/4"	3/4" (19)
MHP12/16	3/4"	1" (25)
MHP16/08	1"	1/2" (12)
MHP16/10	1"	5/8" (16)
MHP16/12	1"	3/4" (19)
MHP16/16	1"	1" (25)
MHP16/20	1"	1.1/4" (32)
MHP20/16	1.1/4"	1" (25)
MHP20/20	1.1/4"	1.1/4" (32)
MHP20/24	1.1/4"	1.1/2" (38)
MHP24/24	1.1/2"	1.1/2" (38)
MHP32/24	2"	1.1/2" (38)
MHP32/32	2"	2" (50)

Male Hosetail BSPP - Nickel Plated



NP

Part Number	BSPP Male	Hosetail
MHPAM5/4.5MMNP	M5	4
MHPA02/7MMNP	1/8"	7
MHPA02/8MMNP	1/8"	8
MHPA02/9MMNP	1/8"	9
MHPA04/7MMNP	1/4"	7
MHPA04/8MMNP	1/4"	8
MHPA04/9MMNP	1/4"	9
MHPA04/12MMNP	1/4"	12
MHPA06/9MMNP	3/8"	9
MHPA06/12MMNP	3/8"	12
MHPA06/17MMNP	3/8"	17
MHPA08/12MMNP	1/2"	12

Male Hosetail NPT



NPA

Part Number	NPT Male	Hosetail
MHN02/02	1/8"	1/8" (3)
MHN02/03	1/8"	3/16" (5)
MHN02/04	1/8"	1/4" (6)
MHN02/05	1/8"	5/16" (8)
MHN02/06	1/8"	3/8" (10)
MHN04/03	1/4"	3/16" (5)
MHN04/04	1/4"	1/4" (6)
MHN04/05	1/4"	5/16" (8)
MHN04/06	1/4"	3/8" (10)
MHN04/08	1/4"	1/2" (12)
MHN06/04	3/8"	1/4" (6)
MHN06/05	3/8"	5/16" (8)
MHN06/06	3/8"	3/8" (10)
MHN06/08	3/8"	1/2" (12)
MHN06/10	3/8"	5/8" (16)
MHN06/12	3/8"	3/4" (19)
MHN08/04	1/2"	1/4" (6)
MHN08/05	1/2"	5/16" (8)
MHN08/06	1/2"	3/8" (10)
MHN08/08	1/2"	1/2" (12)
MHN08/10	1/2"	5/8" (16)
MHN08/12	1/2"	3/4" (19)
MHN08/16	1/2"	1" (25)
MHN12/06	3/4"	3/8" (10)
MHN12/08	3/4"	1/2" (12)
MHN12/10	3/4"	5/8" (16)
MHN12/12	3/4"	3/4" (19)
MHN12/16	3/4"	1" (25)
MHN12/20	3/4"	1.1/4" (32)
MHN16/08	1"	1/2" (12)
MHN16/10	1"	5/8" (16)
MHN16/12	1"	3/4" (19)
MHN16/16	1"	1" (25)
MHN16/20	1"	1.1/4" (32)
MHN20/12	1.1/4"	3/4" (19)
MHN20/16	1.1/4"	1" (25)
MHN20/20	1.1/4"	1.1/4" (32)
MHN20/24	1.1/4"	1.1/2" (38)
MHN24/20	1.1/2"	1.1/4" (32)
MHN24/24	1.1/2"	1.1/2" (38)
MHN24/32	1.1/2"	2" (50)
MHN32/24	2"	1.1/2" (38)
MHN32/32	2"	2" (50)

Male Hosetail Metric



NPA

Part Number	Metric Male	Hosetail
MHM5/3MM	M5x0.8	3mm
MHM5/4MM	M5x0.8	4mm
MHM6/4MM	M6x1.0	4mm
MHM8/04	M8x1.0	1/4" (6)
MHM10/04	M10x1.0	1/4" (6)
MHM10/05	M10x1.0	5/16" (8)
MHM10/06	M10x1.0	3/8" (10)
MHM12/04	M12x1.5	1/4" (6)
MHM12/05	M12x1.5	5/16" (8)
MHM12/06	M12x1.5	3/8" (10)
MHM14/06	M14x1.5	3/8" (10)
MHM16/06	M16x1.5	3/8" (10)
MHM16/08	M16x1.5	1/2" (12)
MHM18/06	M18x1.5	3/8" (10)
MHM18/08	M18x1.5	1/2" (12)
MHM22/08	M22x1.5	1/2" (12)
MHM22/12	M22x1.5	3/4" (19)

Male Lugged Fitting - BSPP



NPA

Part Number	BSPP Male	Hosetail
LM08	1/2"	1/2" (12)
LM12	3/4"	3/4" (19)
LM16	1"	1" (25)
LM20	1.1/4"	1.1/4" (32)
LM24	1.1/2"	1.1/2" (38)
LM32	2"	2" (50)
LM40	2.1/2"	2.1/2" (63)
LM48	3"	3" (75)
LM64	4"	4" (100)

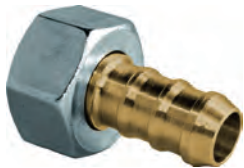
Female Hosetail 60° Coned BSPP



NPA

Part Number	BSPP Female	Hosetail
FHC02/02	1/8"	1/8" (3)
FHC02/03	1/8"	3/16" (5)
FHC02/04	1/8"	1/4" (6)
FHC04/02	1/4"	1/8" (3)
FHC04/03	1/4"	3/16" (5)
FHC04/04	1/4"	1/4" (6)
FHC04/05	1/4"	5/16" (8)
FHC04/06	1/4"	3/8" (10)
FHC06/04	3/8"	1/4" (6)
FHC06/05	3/8"	5/16" (8)
FHC06/06	3/8"	3/8" (10)
FHC06/08	3/8"	1/2" (12)
FHC08/04	1/2"	1/4" (6)
FHC08/05	1/2"	5/16" (8)
FHC08/06	1/2"	3/8" (10)
FHC08/08	1/2"	1/2" (12)
FHC08/10	1/2"	5/8" (16)
FHC12/06	3/4"	3/8" (10)
FHC12/08	3/4"	1/2" (12)
FHC12/10	3/4"	5/8" (16)
FHC12/12	3/4"	3/4" (19)
FHC16/08	1"	1/2" (12)
FHC16/10	1"	5/8" (16)
FHC16/12	1"	3/4" (19)
FHC16/16	1"	1" (25)
FHC20/16	1.1/4"	1" (25)
FHC20/20	1.1/4"	1.1/4" (32)
FHC24/20	1.1/2"	1.1/4" (32)
FHC24/24	1.1/2"	1.1/2" (38)
FHC32/24	2"	1.1/2" (38)
FHC32/32	2"	2" (50)

Female Hosetail 60° Coned BSPP NP 2 Piece



NP

Part Number	BSPP Female	Hosetail
F03/8-10	3/8"	10mm
F03/8-13	3/8"	13mm
F01/2-10	1/2"	10mm
F01/2-13	1/2"	13mm
F01/2-16	1/2"	16mm
F03/4-16	3/4"	16mm
F03/4-19	3/4"	19mm
F01-25	1"	25mm

Female Hosetail 60° Coned BSPP Zinc Plated



ZP

Part Number	BSPP Female	Hosetail
SFHC04/03	1/4"	3/16" (5)
SFHC04/04	1/4"	1/4" (6)
SFHC04/05	1/4"	5/16" (8)
SFHC04/06	1/4"	3/8" (10)
SFHC06/04	3/8"	1/4" (6)
SFHC06/05	3/8"	5/16" (8)
SFHC06/06	3/8"	3/8" (10)

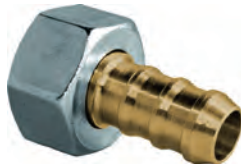
Female Hosetail Flat Seat BSPP Swivel - Fiber Washer



NPA

Part Number	BSPP Female	Hosetail
FHW02/02	1/8"	1/8" (3)
FHW02/03	1/8"	3/16" (5)
FHW02/04	1/8"	1/4" (6)
FHW04/03	1/4"	3/16" (5)
FHW04/04	1/4"	1/4" (6)
FHW04/05	1/4"	5/16" (8)
FHW04/06	1/4"	3/8" (10)
FHW06/04	3/8"	1/4" (6)
FHW06/05	3/8"	5/16" (8)
FHW06/06	3/8"	3/8" (10)
FHW06/08	3/8"	1/2" (12)
FHW08/04	1/2"	1/4" (6)
FHW08/05	1/2"	5/16" (8)
FHW08/06	1/2"	3/8" (10)
FHW08/08	1/2"	1/2" (12)
FHW08/10	1/2"	5/8" (16)
FHW12/06	3/4"	3/8" (10)
FHW12/08	3/4"	1/2" (12)
FHW12/10	3/4"	5/8" (16)
FHW12/12	3/4"	3/4" (19)
FHW16/08	1"	1/2" (12)
FHW16/10	1"	5/8" (16)
FHW16/12	1"	3/4" (19)
FHW16/16	1"	1" (25)
FHW20/20	1.1/4"	1.1/4" (32)
FHW24/24	1.1/2"	1.1/2" (38)
FHW32/32	2"	2" (50)

Female Hosetail Flat Seat BSPP NP 2 Piece No Washer



NP

Part Number	BSPP Female	Hosetail
FP3/8-10BX	3/8"	10mm
FP3/8-13BX	3/8"	13mm
FP1/2-10BX	1/2"	10mm
FP1/2-13BX	1/2"	13mm
FP1/2-16BX	1/2"	16mm
FP3/4-10BX	3/4"	10mm
FP3/4-13BX	3/4"	13mm
FP3/4-16BX	3/4"	16mm
FP3/4-19BX	3/4"	19mm
FP1-19BX	1"	19mm
FP1-25BX	1"	25mm

Female Hosetail Fixed BSPP



NPA

Part Number	BSPP Female	Hosetail
FFH02/03	1/8"	3/16" (5)
FFH02/04	1/8"	1/4" (6)
FFH02/05	1/8"	5/16" (8)
FFH02/06	1/8"	3/8" (10)
FFH04/03	1/4"	3/16" (5)
FFH04/04	1/4"	1/4" (6)
FFH04/05	1/4"	5/16" (8)
FFH04/06	1/4"	3/8" (10)
FFH04/08	1/4"	1/2" (12)
FFH06/04	3/8"	1/4" (6)
FFH06/05	3/8"	5/16" (8)
FFH06/06	3/8"	3/8" (10)
FFH06/08	3/8"	1/2" (12)
FFH08/04	1/2"	1/4" (6)
FFH08/05	1/2"	5/16" (8)
FFH08/06	1/2"	3/8" (10)
FFH08/08	1/2"	1/2" (12)
FFH08/10	1/2"	5/8" (16)
FFH08/12	1/2"	3/4" (19)
FFH08/16	1/2"	1" (25)

Female Lugged Fitting - BSPP - Washer 2 Piece



NPA

Part Number	BSPP Female	Hosetail
LF08	1/2"	1/2" (12)
LF12/08	3/4"	1/2" (12)
LF12	3/4"	3/4" (19)
LF16/12	1"	3/4" (19)
LF16	1"	1" (25)
LF20	1.1/4"	1.1/4" (32)
LF24	1.1/2"	1.1/2" (38)
LF32	2"	2" (50)
LF40	2.1/2"	2.1/2" (63)
LF48	3"	3" (75)
LF64	4"	4" (100)

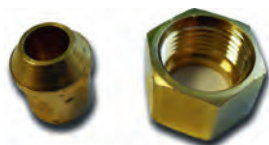
Metric Compression Hosetail, Nut, Olive 3 Piece



NP

Part Number	Tube O.D	Hosetail
MB15-10BX	15mm	10mm
MB15-13BX	15mm	13mm
MB15-16BX	15mm	16mm
MB22-13BX	22mm	13mm
MB22-19BX	22mm	19mm
MB28-18BX	28mm	25mm

Soldering Nut & Nipple



NPA

Part Number	BSPP Female	Tube O.D
SN02/03	1/8"	3/16"
SN04/04	1/4"	1/4"
SN04/05	1/4"	5/16"
SN06/06	3/8"	3/8"
SN08/08	1/2"	1/2"
SN12/12	3/4"	3/4"

Male 90 deg Hosetail BSPT



NPA

Part Number	BSPT Male	Hosetail
MHC02/0490	1/8"	1/4" (6)
MHC02/0590	1/8"	5/16" (8)
MHC02/0690	1/8"	3/8" (10)
MHC04/0490	1/4"	1/4" (6)
MHC04/0590	1/4"	5/16" (8)
MHC04/0690	1/4"	3/8" (10)
MHC04/0890	1/4"	1/2" (12)
MHC06/0490	3/8"	1/4" (6)
MHC06/0590	3/8"	5/16" (8)
MHC06/0690	3/8"	3/8" (10)
MHC06/0890	3/8"	1/2" (12)
MHC08/0590	1/2"	5/16" (8)
MHC08/0690	1/2"	3/8" (10)
MHC08/0890	1/2"	1/2" (12)

Male 90 deg Swept Hosetail BSPT



NPA

Part Number	BSPT Male	Hosetail
MH02/0590	1/8"	5/16" (8)
MH04/0490	1/4"	1/4" (6)
MH04/0590	1/4"	5/16" (8)
MH04/0690	1/4"	3/8" (10)
MH06/0590	3/8"	5/16" (8)
MH06/0690	3/8"	3/8" (10)

Female 90 deg Hosetail BSPP



NPA

Part Number	BSPP Female	Hosetail
FFH04/0590	1/4"	5/16" (8)
FFH04/0690	1/4"	3/8" (10)
FFH06/0690	3/8"	3/8" (10)
FFH06/0890	3/8"	1/2" (12)

Female 90 deg Hosetail Coned BSPP



NPA

Part Number	BSPP Female	Hosetail
FHC02/0490	1/8"	1/4" (6)
FHC04/0390	1/4"	3/16" (5)
FHC04/0490	1/4"	1/4" (6)
FHC04/0590	1/4"	5/16" (8)
FHC04/0690	1/4"	3/8" (10)
FHC06/0490	3/8"	1/4" (6)
FHC06/0590	3/8"	5/16" (8)
FHC06/0690	3/8"	3/8" (10)
FHC08/0690	1/2"	3/8" (10)
FHC08/0890	1/2"	1/2" (12)

Female 90 deg Hosetail Coned BSPP Nickel Plated



NP

Part Number	BSPP Female	Hosetail
FHC04/0490NP	1/4"	1/4" (6)
FHC04/0590NP	1/4"	5/16" (8)
FHC06/0690NP	3/8"	3/8" (10)
FHC08/0690NP	1/2"	3/8" (10)
FHC08/0890NP	1/2"	1/2" (13)
FHC12/1090NP	3/4"	5/8" (16)
FHC12/1290NP	3/4"	3/4" (19)
FHC16/1690NP	1"	1" (25)

Female 90 deg Hosetail Flat BSPP



NP

Part Number	BSPP Female	Hosetail
FHW06/0690NP	3/8"	3/8" (10)
FHW08/0590NP	1/2"	5/16" (8)
FHW08/0690NP	1/2"	3/8" (10)
FHW08/0890NP	1/2"	1/2" (12)
FHW08/1090NP	1/2"	5/8" (16)
FHW12/0690NP	3/4"	3/8" (10)
FHW12/0890NP	3/4"	1/2" (12)
FHW12/1090NP	3/4"	5/8" (16)
FHW12/1290NP	3/4"	3/4" (19)
FHW16/1690NP	1"	1" (25)

Hose Repair Connector



NPA

Part Number	Hosetail (1)	Hosetail (2)
HRC02/02	1/8" (3)	1/8" (3)
HRC03/03	3/16" (5)	3/16" (5)
HRC04/04	1/4" (6)	1/4" (6)
HRC05/05	5/16" (8)	5/16" (8)
HRC06/04	3/8" (10)	1/4" (6)
HRC06/06	3/8" (10)	3/8" (10)
HRC08/04	1/2" (12)	1/4" (6)
HRC08/05	1/2" (12)	5/16" (8)
HRC08/06	1/2" (12)	3/8" (10)
HRC08/08	1/2" (12)	1/2" (12)
HRC10/06	5/8" (16)	3/8" (10)
HRC10/08	5/8" (16)	1/2" (12)
HRC10/10	5/8" (16)	5/8" (16)
HRC12/06	3/4" (19)	3/8" (10)
HRC12/08	3/4" (19)	1/2" (12)
HRC12/10	3/4" (19)	5/8" (16)
HRC12/12	3/4" (19)	3/4" (19)
HRC16/12	1" (25)	3/4" (19)
HRC16/16	1" (25)	1" (25)
HRC20/20	1.1/4" (32)	1.1/4" (32)
HRC24/24	1.1/2" (38)	1.1/2" (38)
HRC32/32	2" (50)	2" (50)



See our website for all the sizes we stock

Hose Repair Connector - Steel



SP

Part Number	Hosetail
SHRC04/04	1/4" (6)
SHRC05/05	5/16" (8)
SHRC06/06	3/8" (10)
SHRC08/08	1/2" (12)

Hose Repair Connector - Steel (Barrel Type)



Part Number	Hosetail
SHRC12/12	3/4" (19)
SHRC16/16	1" (25)
SHRC20/20	1.1/4" (32)
SHRC24/24	1.1/2" (38)
SHRC32/32	2" (50)
SHRC40/40	2.1/2" (63)
SHRC48/48	3" (75)
SHRC64/64	4" (100)

Lugged Hose Repair Connector



Part Number	Hosetail
LFHRC08/08	1/2" (12)
LFHRC12/12	3/4" (19)
LFHRC16/16	1" (25)
LFHRC20/20	1.1/4" (32)

Tee Hose Repair Connector



Part Number	Hosetail
HRCT03	3/16" (5)
HRCT04	1/4" (6)
HRCT05	5/16" (8)
HRCT06	3/8" (10)
HRCT08	1/2" (12)
HRCT12	3/4" (19)

Y Hose Repair Connector



Part Number	Hosetail
HRCY03	3/16" (5)
HRCY04	1/4" (6)
HRCY05	5/16" (8)
HRCY06	3/8" (10)
HRCY08	1/2" (12)

Cross Hose Repair Connector



Part Number	Hosetail
HRCX04	1/4" (6)
HRCX05	5/16" (8)
HRCX06	3/8" (10)
HRCX08	1/2" (12)

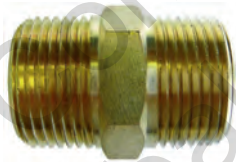
Metric Stand Pipe



Part Number	Stand Pipe	Hosetail
CL10-10	10mm	10mm
CL15-10	15mm	10mm
CL15-13	15mm	13mm
CL22-19	22mm	19mm



Equal Connector BSPT



Part Number	BSPT Male
EC02/02	1/8"
EC04/04	1/4"
EC06/06	3/8"
EC08/08	1/2"
EC12/12	3/4"
EC16/16	1"
EC20/20	1.1/4"
EC24/24	1.1/2"
EC32/32	2"
EC40/40	2.1/2"
EC48/48	3"

Equal Connector BSPT Nickel Plated



Part Number	BSPT Male
EC02/02NP	1/8"
EC04/04NP	1/4"
EC06/06NP	3/8"
EC08/08NP	1/2"
EC12/12NP	3/4"
EC16/16NP	1"
EC20/20NP	1.1/4"
EC24/24NP	1.1/2"
EC32/32NP	2"

Equal Connector BSPP Nickel Plated



Part Number	BSPP Male
ECPAM5NP	M5
ECPA02/02NP	1/8"
ECPA04/04NP	1/4"
ECPA06/06NP	3/8"
ECPA08/08NP	1/2"



3



For our new range of Steel Hydraulic Hose Fittings see Section 3

Equal Connector BSPP Coned x BSPT



Part Number	BSPP Male	BSPT Male
ECPT02/02	1/8"	1/8"
ECPT04/04	1/4"	1/4"
ECPT06/06	3/8"	3/8"
ECPT08/08	1/2"	1/2"
ECPT12/12	3/4"	3/4"
ECPT16/16	1"	1"
ECPT20/20	1.1/4"	1.1/4"
ECPT24/24	1.1/2"	1.1/2"
ECPT32/32	2"	2"

Equal Connector BSPT x NPT



Part Number	BSPT Male	NPT Male
ECBN02/02	1/8"	1/8"
ECBN04/04	1/4"	1/4"
ECBN06/06	3/8"	3/8"
ECBN08/08	1/2"	1/2"
ECBN12/12	3/4"	3/4"
ECBN16/16	1"	1"

Equal Connector NPT



NPA

Part Number	NPT Male
ECN02/02	1/8"
ECN04/04	1/4"
ECN06/06	3/8"
ECN08/08	1/2"
ECN12/12	3/4"
ECN16/16	1"

Equal Connector Metric



NPA

Part Number	Metric Male
ECM5	M5x0.8
ECM6	M6x1.0
ECM8	M8x1.0
ECM10	M10x1.0
ECM12	M12x1.5
ECM14	M14x1.5
ECM16	M16x1.5
ECM18	M18x1.5
ECM20	M20x1.5
ECM22	M22x1.5
ECM24	M24x1.5
ECM26	M26x1.5
ECM28	M28x1.5

Double Bodied Union Coned BSPP



NPA

Part Number	BSPP Male (1)	BSPP Male (2)
DB02/02	1/8"	1/8"
DB04/02	1/4"	1/8"
DB04/04	1/4"	1/4"
DB06/02	3/8"	1/8"
DB06/04	3/8"	1/4"
DB06/06	3/8"	3/8"
DB08/04	1/2"	1/4"
DB08/06	1/2"	3/8"
DB08/08	1/2"	1/2"
DB12/06	3/4"	3/8"
DB12/08	3/4"	1/2"
DB12/12	3/4"	3/4"
DB16/06	1"	3/8"
DB16/08	1"	1/2"
DB16/12	1"	3/4"
DB16/16	1"	1"
DB20/16	1.1/4"	1"
DB20/20	1.1/4"	1.1/4"
DB24/20	1.1/2"	1.1/4"
DB24/24	1.1/2"	1.1/2"
DB32/24	2"	1.1/2"
DB32/32	2"	2"

Equal Double Bodied Union Flat Face BSPP



NPA

Part Number	BSPP Male
DB02/02FF	1/8"
DB04/04FF	1/4"
DB06/06FF	3/8"
DB08/08FF	1/2"
DB12/12FF	3/4"
DB16/16FF	1"

Equal Bulkhead Connector Coned BSPP



NPA

Part Number	BSPP Male
BH02/02	1/8"
BH04/04	1/4"
BH06/06	3/8"
BH08/08	1/2"
BH12/12	3/4"
BH16/16	1"
BH20/20	1.1/4"
BH24/24	1.1/2"
BH32/32	2"

Equal Barrel Nipple BSPT



NPA

Part Number	BSPT Male
ECB02/02	1/8"
ECB04/04	1/4"
ECB06/06	3/8"
ECB08/08	1/2"
ECB12/12	3/4"
ECB16/16	1"

Breakable Joint BSPT - 3 Piece



Part Number	BSPT Male (1)	BSPT Male (2)
BR02/02	1/8"	1/8"
BR04/04	1/4"	1/4"
BR04/06	1/4"	3/8"
BR06/06	3/8"	3/8"
BR08/08	1/2"	1/2"
BR12/12	3/4"	3/4"
BR16/16	1"	1"

Reducing Connector BSPT



NPA

Part Number	BSPT Male (1)	BSPT Male (2)
RC04/02	1/4"	1/8"
RC06/02	3/8"	1/8"
RC06/04	3/8"	1/4"
RC08/02	1/2"	1/8"
RC08/04	1/2"	1/4"
RC08/06	1/2"	3/8"
RC12/04	3/4"	1/4"
RC12/06	3/4"	3/8"
RC12/08	3/4"	1/2"
RC16/08	1"	1/2"
RC16/12	1"	3/4"

Reducing Connector BSPP Nickel Plated



NP

Part Number	BSPP Male (1)	BSPP Male (2)
RCPA02/M5NP	1/8"	M5
RCPA04/02NP	1/4"	1/8"
RCPA06/04NP	3/8"	1/4"
RCPA08/04NP	1/2"	1/4"
RCPA08/06NP	1/2"	3/8"
RCPA12/08NP	3/4"	1/2"

Reducing Connector BSPP x BSPT



NPA

Part Number	BSPP Male	BSPT Male
RCPT02/04	1/8"	1/4"
RCPT04/02	1/4"	1/8"
RCPT04/06	1/4"	3/8"
RCPT04/08	1/4"	1/2"
RCPT06/04	3/8"	1/4"
RCPT06/08	3/8"	1/2"
RCPT08/04	1/2"	1/4"
RCPT08/06	1/2"	3/8"
RCPT08/12	1/2"	3/4"
RCPT12/06	3/4"	3/8"
RCPT12/08	3/4"	1/2"
RCPT16/08	1"	1/2"
RCPT16/12	1"	3/4"

Reducing Connector NPT



Part Number	NPT Male (1)	NPT Male (2)
RCN04/02	1/4"	1/8"
RCN06/02	3/8"	1/8"
RCN06/04	3/8"	1/4"
RCN08/02	1/2"	1/8"
RCN08/04	1/2"	1/4"
RCN08/06	1/2"	3/8"
RCN12/04	3/4"	1/4"
RCN12/06	3/4"	3/8"
RCN12/08	3/4"	1/2"
RCN16/08	1"	1/2"
RCN16/12	1"	3/4"

Equal Connector BSPT x BSPP



Part Number	BSPT Male	BSPP Female
MFEM5	M5	M5
MFE02/02	1/8"	1/8"
MFEU04/02	1/4" UNF	1/8"
MFE04/04	1/4"	1/4"
MFE06/06	3/8"	3/8"
MFE08/08	1/2"	1/2"
MFE12/12	3/4"	3/4"
MFE16/16	1"	1"

Equal Connector BSPT x BSPP Nickel Plated



Part Number	BSPT Male	BSPP Female
MFEM5NP	M5	M5
MFE02/02NP	1/8"	1/8"
MFE04/04NP	1/4"	1/4"
MFE06/06NP	3/8"	3/8"
MFE08/08NP	1/2"	1/2"
MFE12/12NP	3/4"	3/4"
MFE16/16NP	1"	1"

Equal Swivel Connector BSPT x BSPP 60° Cone Seat



Part Number	BSPT Male	BSPP Female
MFESWC02	1/8"	1/8"
MFESWC04	1/4"	1/4"
MFESWC06	3/8"	3/8"
MFESWC08	1/2"	1/2"

Equal Swivel Connector BSPT x BSPP 60° Cone Seat Nickel Plated



Part Number	BSPT Male	BSPP Female
MFESW02	1/8"	1/8"
MFESW04	1/4"	1/4"
MFESW06	3/8"	3/8"

Extended Male x Female Adaptor BSPP Nickel Plated



Part Number	BSPP Male	BSPP Female	Length
MFEEA02/02-L42NP	1/8"	1/8"	42mm
MFEEA04/04-L35NP	1/4"	1/4"	35mm
MFEEA04/04-L51NP	1/4"	1/4"	51mm

Equal Connector - NPT



Part Number	NPT Male	NPS Female
MFEN02/02	1/8"	1/8"
MFEN04/04	1/4"	1/4"
MFEN06/06	3/8"	3/8"
MFEN08/08	1/2"	1/2"
MFEN12/12	3/4"	3/4"
MFEN16/16	1"	1"

Reducer BSPT x BSPP & Metric



Part Number	BSPT Male	BSPP Female
MFRM5/02	M5	1/8"
MFRM5/04	M5	1/4"
MFRM6/02	M6	1/8"
MFRM6/04	M6	1/4"
MFR02/04	1/8"	1/4"
MFR02/06	1/8"	3/8"
MFR04/06	1/4"	3/8"
MFR04/08	1/4"	1/2"
MFR06/08	3/8"	1/2"
MFR08/12	1/2"	3/4"
MFR12/16	3/4"	1"

Reducer BSPT x BSPP Nickel Plated



Part Number	BSPT Male	BSPP Female
MFR02/04NP	1/8"	1/4"
MFR02/06NP	1/8"	3/8"
MFR04/06NP	1/4"	3/8"
MFR04/08NP	1/4"	1/2"
MFR06/08NP	3/8"	1/2"
MFR08/12NP	1/2"	3/4"
MFR12/16NP	3/4"	1"

Reducer NPT



Part Number	NPT Male	NPS Female
MFRN02/04	1/8"	1/4"
MFRN02/06	1/8"	3/8"
MFRN04/06	1/4"	3/8"
MFRN04/08	1/4"	1/2"
MFRN06/08	3/8"	1/2"
MFRN08/12	1/2"	3/4"
MFRN12/16	3/4"	1"

Product **Bushes BSPT/BSPP/NPT/Metric**

Bush BSPT/BSPP/Metric



Part Number	BSPT Male	BSPP Female
MFB02/M5	1/8"	M5x0.8
MFB04/02	1/4"	1/8"
MFB06/02	3/8"	1/8"
MFB06/04	3/8"	1/4"
MFB08/02	1/2"	1/8"
MFB08/04	1/2"	1/4"
MFB08/06	1/2"	3/8"
MFB12/02	3/4"	1/8"
MFB12/04	3/4"	1/4"
MFB12/06	3/4"	3/8"
MFB12/08	3/4"	1/2"
MFB16/04	1"	1/4"
MFB16/06	1"	3/8"
MFB16/08	1"	1/2"
MFB16/12	1"	3/4"
MFB20/12	1.1/4"	3/4"
MFB20/16	1.1/4"	1"
MFB24/20	1.1/2"	1.1/4"
MFB32/20	2"	1.1/4"
MFB32/24	2"	1.1/2"

Bush BSPT/BSPP/Metric Nickel Plated



NP

Part Number	BSPT Male	BSPP Female
MFB02/M5NP	1/8"	M5x0.8
MFB04/02NP	1/4"	1/8"
MFB06/02NP	3/8"	1/8"
MFB06/04NP	3/8"	1/4"
MFB08/02NP	1/2"	1/8"
MFB08/04NP	1/2"	1/4"
MFB08/06NP	1/2"	3/8"
MFB12/02NP	3/4"	1/8"
MFB12/04NP	3/4"	1/4"
MFB12/06NP	3/4"	3/8"
MFB12/08NP	3/4"	1/2"
MFB16/04NP	1"	1/4"
MFB16/06NP	1"	3/8"
MFB16/08NP	1"	1/2"
MFB16/12NP	1"	3/4"

Bush BSPP



NPA

Part Number	BSPP Male	BSPP Female
MFBP04/02	1/4"	1/8"
MFBP06/02	3/8"	1/8"
MFBP06/04	3/8"	1/4"
MFBP08/02	1/2"	1/8"
MFBP08/04	1/2"	1/4"
MFBP08/06	1/2"	3/8"
MFBP12/02	3/4"	1/8"
MFBP12/04	3/4"	1/4"
MFBP12/06	3/4"	3/8"
MFBP12/08	3/4"	1/2"
MFBP16/04	1"	1/4"
MFBP16/06	1"	3/8"
MFBP16/08	1"	1/2"
MFBP16/12	1"	3/4"

Bush BSPP Nickel Plated



NP

Part Number	BSPP Male	BSPP Female
MFBPA02/M5NP	1/8"	M5
MFBPA04/02NP	1/4"	1/8"
MFBPA06/04NP	3/8"	1/4"
MFBPA08/02NP	1/2"	1/8"
MFBPA08/04NP	1/2"	1/4"
MFBPA08/06NP	1/2"	3/8"
MFBPA12/06NP	3/4"	3/8"

Bush NPT



NPA

Part Number	NPT Male	NPS Female
MFBN04/02	1/4"	1/8"
MFBN06/02	3/8"	1/8"
MFBN06/04	3/8"	1/4"
MFBN08/02	1/2"	1/8"
MFBN08/04	1/2"	1/4"
MFBN08/06	1/2"	3/8"
MFBN12/04	3/4"	1/4"
MFBN12/06	3/4"	3/8"
MFBN12/08	3/4"	1/2"
MFBN16/04	1"	1/4"
MFBN16/06	1"	3/8"
MFBN16/08	1"	1/2"
MFBN16/12	1"	3/4"

Bush Metric/BSPP



NPA

Part Number	Metric Male	Metric Female
MFBM16/M12	M16x1.5	M12x1.5
MFBM16/04	M16x1.5	1/4" BSPP
MFBM18/04	M18x1.5	1/4" BSPP
MFBM20/04	M20x1.5	1/4" BSPP
MFBM20/M16	M20x1.5	M16x1.5
MFBM22/04	M22x1.5	1/4" BSPP
MFBM22/06	M22x1.5	3/8" BSPP
MFBM22/M16	M22x1.5	M16x1.5

Shoulderless Bush BSPP



NPA

Part Number	BSPP Male	BSPP Female
MFBS04/02	1/4"	1/8"
MFBS06/02	3/8"	1/8"
MFBS06/04	3/8"	1/4"
MFBS08/04	1/2"	1/4"
MFBS08/06	1/2"	3/8"
MFBS12/06	3/4"	3/8"
MFBS12/08	3/4"	1/2"
MFBS16/08	1"	1/2"
MFBS16/12	1"	3/4"

Bulkhead Connector BSPP/Metric C/W Lock Nut



NPA

Part Number	Metric Male	BSPP Female	Max Plate (mm)
BHMM5	M10x1.0	M5	7
BHM02	M16x1.5	1/8"	10
BHM04	M20x1.5	1/4"	16
BHM06	M26x1.5	3/8"	16
BHM08	M28x1.5	1/2"	21
BHM12	M34x1.5	3/4"	23
BHM16	M42x1.5	1"	25

Bulkhead BSPP/Metric Nickel Plated C/W Lock Nut



NP

Part Number	Metric Male	BSPP Female	Max Plate (mm)
BHMM5NP	M10x1.5	M5	7
BHM02NP	M16x1.5	1/8"	10
BHM04NP	M20x1.5	1/4"	16
BHM06NP	M26x1.5	3/8"	16
BHM08NP	M28x1.5	1/2"	21
BHM12NP	M34x1.5	3/4"	23
BHM16NP	M42x1.5	1"	25



We can supply fittings to suit your individual requirements. Please call us

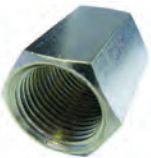
Product ▶ Sockets BSPP/NPT/Metric

Equal Socket BSPP



Part Number	BSPP Female
FFA02/02	1/8"
FFA04/04	1/4"
FFA06/06	3/8"
FFA08/08	1/2"
FFA12/12	3/4"
FFA16/16	1"
FFA20/20	1.1/4"
FFA24/24	1.1/2"
FFA32/32	2"
FFA40/40	2.1/2"
FFA48/48	3"
FFA64/64	4"

Equal Socket BSPP Nickel Plated



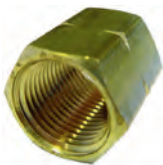
Part Number	BSPP Female
FFA02/02NP	1/8"
FFA04/04NP	1/4"
FFA06/06NP	3/8"
FFA08/08NP	1/2"
FFA12/12NP	3/4"
FFA16/16NP	1"

Equal Socket BSPP & Metric



Part Number	BSPP Female
FFSAMS/M5NP	M5
FFSA02/02NP	1/8"
FFSA04/04NP	1/4"
FFSA06/06NP	3/8"
FFSA08/08NP	1/2"

Equal Socket NPS



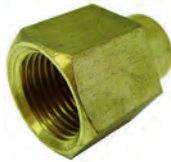
Part Number	NPS Female
FFAN02/02	1/8"
FFAN04/04	1/4"
FFAN06/06	3/8"
FFAN08/08	1/2"
FFAN12/12	3/4"
FFAN16/16	1"

Equal Socket Metric



Part Number	Metric Female (1)	Metric Female (2)
FFAM5	M5x0.8	M5x0.8
FFAM6	M6x1.0	M6x1.0
FFAM8	M8x1.0	M8x1.0
FFAM10	M10x1.0	M10x1.0
FFAM12	M12x1.5	M12x1.5
FFAM14	M14x1.5	M14x1.5
FFAM16	M16x1.5	M16x1.5
FFAM18	M18x1.5	M18x1.5
FFAM20	M20x1.5	M20x1.5
FFAM22	M22x1.5	M22x1.5
FFAM24	M24x1.5	M24x1.5
FFAM26	M26x1.5	M26x1.5
FFAM28	M28x1.5	M28x1.5
FFAM30	M30x1.5	M30x1.5

Reducing Socket BSPP



Part Number	BSPP Female (1)	BSPP Female (2)
FFR04/02	1/4"	1/8"
FFR06/02	3/8"	1/8"
FFR06/04	3/8"	1/4"
FFR08/04	1/2"	1/4"
FFR08/06	1/2"	3/8"
FFR12/04	3/4"	1/4"
FFR12/06	3/4"	3/8"
FFR12/08	3/4"	1/2"
FFR16/06	1"	3/8"
FFR16/08	1"	1/2"
FFR16/12	1"	3/4"

Reducing Socket BSPP Nickel Plated



Part Number	BSPP Female (1)	BSPP Female (2)
FFR04/02NP	1/4"	1/8"
FFR06/02NP	3/8"	1/8"
FFR06/04NP	3/8"	1/4"
FFR08/04NP	1/2"	1/4"
FFR08/06NP	1/2"	3/8"
FFR12/04NP	3/4"	1/4"
FFR12/06NP	3/4"	3/8"
FFR12/08NP	3/4"	1/2"
FFR16/06NP	1"	3/8"
FFR16/08NP	1"	1/2"
FFR16/12NP	1"	3/4"

Product ▶ Plugs Caps & Lock Nuts

Hexagonal Hollow Plug BSPT



Part Number	BSPT Male
PBT02	1/8"
PBT04	1/4"
PBT06	3/8"
PBT08	1/2"
PBT10	5/8"
PBT12	3/4"
PBT14	7/8"
PBT16	1"
PBT20	1.1/4"
PBT24	1.1/2"
PBT32	2"

Hexagonal Hollow Plug BSPT Nickel Plated



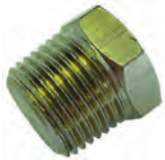
Part Number	BSPT Male
PBT02NP	1/8"
PBT04NP	1/4"
PBT06NP	3/8"
PBT08NP	1/2"
PBT10NP	5/8"
PBT12NP	3/4"
PBT16NP	1"
PBT20NP	1.1/4"

Hexagonal Solid Plug BSPT



Part Number	BSPT Male
PBT02S	1/8"
PBT04S	1/4"
PBT06S	3/8"
PBT08S	1/2"
PBT10S	5/8"
PBT12S	3/4"
PBT14S	7/8"
PBT16S	1"
PBT20S	1.1/4"
PBT24S	1.1/2"
PBT32S	2"

Hexagonal Solid Plug BSPT Nickel Plated



Part Number	BSPT Male
PBT02SNP	1/8"
PBT04SNP	1/4"
PBT06SNP	3/8"
PBT08SNP	1/2"
PBT10SNP	5/8"
PBT12SNP	3/4"
PBT16SNP	1"
PBT20SNP	1.1/4"

Hexagonal Hollow Plug BSPP



Part Number	BSPP Male
PBP02	1/8"
PBP04	1/4"
PBP06	3/8"
PBP08	1/2"
PBP10	5/8"
PBP12	3/4"
PBP16	1"
PBP20	1.1/4"
PBP24	1.1/2"
PBP32	2"

Hexagonal Hollow Plug BSPP Nickel Plated



Part Number	BSPP Male
PBP02NP	1/8"
PBP04NP	1/4"
PBP06NP	3/8"
PBP08NP	1/2"
PBP10NP	5/8"
PBP12NP	3/4"
PBP16NP	1"

Hexagonal Solid Plug BSPP



Part Number	BSPP Male
PBP02S	1/8"
PBP04S	1/4"
PBP06S	3/8"
PBP08S	1/2"
PBP10S	5/8"
PBP12S	3/4"
PBP16S	1"
PBP20S	1.1/4"
PBP24S	1.1/2"
PBP32S	2"

Hexagonal Solid Plug BSPP Nickel Plated



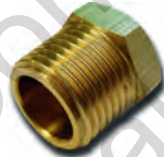
Part Number	BSPP Male
PBP02SNP	1/8"
PBP04SNP	1/4"
PBP06SNP	3/8"
PBP08SNP	1/2"
PBP10SNP	5/8"
PBP12SNP	3/4"
PBP16SNP	1"

Male Plug BSPP



Part Number	BSPP Male
PMPAM5NP	M5
PMPA02NP	1/8"
PMPA04NP	1/4"
PMPA06NP	3/8"
PMPA08NP	1/2"
PMPA12NP	3/4"
PMPA16NP	1"

Hexagonal Hollow Plug NPT



Part Number	NPT Male
PBTN02	1/8"
PBTN04	1/4"
PBTN06	3/8"
PBTN08	1/2"
PBTN12	3/4"
PBTN16	1"
PBTN20	1.1/4"
PBTN24	1.1/2"
PBTN32	2"

Hexagonal Solid Plug NPT



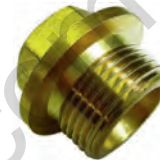
Part Number	NPT Male
PBTN02S	1/8"
PBTN04S	1/4"
PBTN06S	3/8"
PBTN08S	1/2"
PBTN12S	3/4"
PBTN16S	1"
PBTN20S	1.1/4"
PBTN24S	1.1/2"
PBTN32S	2"

Hexagonal Plug Metric

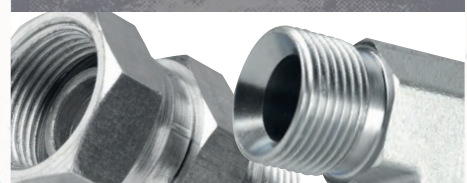


Part Number	Metric Male
PBPM5	M5x0.8
PBPM6	M6x1.0
PBPM8	M8x1.0
PBPM10	M10x1.0
PBPM12	M12x1.5
PBPM14	M14x1.5
PBPM16	M16x1.5
PBPM18	M18x1.5
PBPM20	M20x1.5
PBPM22	M22x1.5
PBPM24	M24x1.5
PBPM26	M26x1.5
PBPM28	M28x1.5
PBPM30	M30x1.5

Flanged Plug BSPP



Part Number	BSPP Male
FP02	1/8"
FP04	1/4"
FP06	3/8"
FP08	1/2"
FP12	3/4"
FP16	1"
FP20	1.1/4"
FP24	1.1/2"
FP32	2"



We stock a large range of Hydraulic Adaptors. Special Adaptors can be made to suit your requirements

Square Headed Plug BSPP

NPA

Part Number	BSPP Male
QPBT04	1/4"
QPBT06	3/8"
QPBT08	1/2"
QPBT12	3/4"
QPBT16	1"
QPBT20	1.1/4"
QPBT24	1.1/2"
QPBT32	2"

Allen Key Plug BSPT

NPA

Part Number	BSPT Male
AK02	1/8"
AK04	1/4"
AK06	3/8"
AK08	1/2"
AK12	3/4"
AK16	1"

Allen Key Plug BSPT Nickel Plated

NP

Part Number	BSPT Male
AK02NP	1/8"
AK04NP	1/4"
AK06NP	3/8"
AK08NP	1/2"
AK12NP	3/4"
AK16NP	1"

Allen Key Plug BSPT Steel

ZP

Part Number	BSPT Male
SAK02	1/8"
SAK04	1/4"
SAK06	3/8"
SAK08	1/2"

Allen Key Plug BSPP

NPA

Part Number	BSPP Male
AKP02	1/8"
AKP04	1/4"
AKP06	3/8"
AKP08	1/2"

Allen Key Plug BSPP Nickel Plated

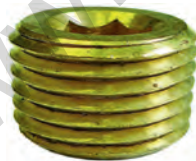
NP

Part Number	BSPP Male
AKP02NP	1/8"
AKP04NP	1/4"
AKP06NP	3/8"
AKP08NP	1/2"

Allen Key Plug BSPP c/w O Ring

NP

Part Number	BSPP Male
AKC02	1/8"
AKC04	1/4"
AKC06	3/8"
AKC08	1/2"

Allen Key Plug NPT

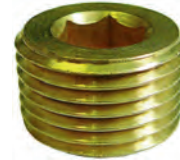
NPA

Part Number	NPT Male
AKN02	1/8"
AKN04	1/4"
AKN06	3/8"
AKN08	1/2"

Allen Key Plug NPT Nickel Plated

NP

Part Number	NPT Male
AKN02NP	1/8"
AKN04NP	1/4"
AKN06NP	3/8"
AKN08NP	1/2"

Allen Key Plug Metric

NPA

Part Number	Metric Male
AKM8	M8x1.0
AKM10	M10x1.0
AKM12	M12x1.5
AKM14	M14x1.5
AKM16	M16x1.5
AKM18	M18x1.5
AKM20	M20x1.5
AKM22	M22x1.5
AKM24	M24x1.5
AKM26	M26x1.5

Air Vents - Manually Operated

Part Number	BSPP Male
AV02	1/8"
AV04	1/4"
AV08	1/2"

Air Vents - Manually Operated Nickel Plated

NP

Part Number	BSPP Male
AV08NP	1/2"

Female Cap BSPP

NPA

Part Number	BSPP Female
CAPO2	1/8"
CAPO4	1/4"
CAPO6	3/8"
CAPO8	1/2"
CAP12	3/4"
CAP16	1"
CAP20	1.1/4"
CAP24	1.1/2"
CAP32	2"

Female Cap BSPP Nickel Plated



NP

Part Number	BSPP Female
CAPO2NP	1/8"
CAPO4NP	1/4"
CAPO6NP	3/8"
CAPO8NP	1/2"
CAP12NP	3/4"
CAP16NP	1"

Female Cap BSPP Nickel Plated



NP

Part Number	BSPP Female
PFPA02NP	1/8"
PFPA04NP	1/4"
PFPA06NP	3/8"
PFPA08NP	1/2"

Locknut BSPP



NPA

Part Number	BSPP Female	Equivalent
LN02	1/8"	34022301
LN04	1/4"	34022302
LN06	3/8"	34022303
LN08	1/2"	34022304
LN10	5/8"	-
LN12	3/4"	34022306
LN14	7/8"	34022307
LN16	1"	34022308
LN20	1.1/4"	-
LN24	1.1/2"	-
LN32	2"	-

Lock Nut BSPP Nickel Plated



NP

Part Number	BSPP Female
LN02NP	1/8"
LN04NP	1/4"
LN06NP	3/8"
LN08NP	1/2"
LN10NP	5/8"
LN12NP	3/4"
LN14NP	7/8"
LN16NP	1"
LN20NP	1.1/4"

Locknut Metric



NPA

Part Number	Equivalent	Metric Female
LNM10	-	M10x1.0
LNM12	36052001	M12x1.0
LNM14	-	M14x1.0
LNM15	36052003	M15x1.0
LNM16	-	M16x1.5
LNM18	36052005	M18x1.5
LNM20	36052006	M20x1.5
LNM22	-	M22x1.5
LNM24	36052007	M24x1.5
LNM26	-	M26x1.5
LNM28	-	M28x1.5
LNM30	36052008	M30x1.5
LNM34	-	M34x1.5
LNM38	-	M38x1.5
LNM42	-	M42x1.5
LNM45	-	M45x1.5

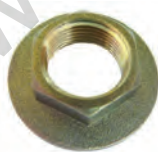
Lock Nut Metric Nickel Plated



NP

Part Number	Metric Female
LNM10NP	M10x1.0
LNM12NP	M12x1.0
LNM15NP	M15x1.0
LNM16NP	M16x1.5
LNM18NP	M18x1.5
LNM20NP	M20x1.5
LNM22NP	M22x1.5
LNM24NP	M24x1.5
LNM26NP	M26x1.5
LNM28NP	M28x1.5

Flanged Back Nut BSPP

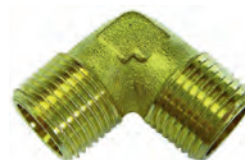


NPA

Part Number	BSPP Female
FLN06	3/8"
FLN08	1/2"
FLN12	3/4"
FLN16	1"
FLN20	1.1/4"
FLN24	1.1/2"

Product ▶ Elbows

Equal Elbow BSPT Male x Male



NPA

Part Number	BSPT Male
MML02	1/8"
MML04	1/4"
MML06	3/8"
MML08	1/2"
MML12	3/4"
MML16	1"

Equal Elbow BSPT Male x Male Nickel Plated



NP

Part Number	BSPT Male
MML02NP	1/8"
MML04NP	1/4"
MML06NP	3/8"
MML08NP	1/2"
MML12NP	3/4"
MML16NP	1"

Equal Elbow BSPT x BSPP



NPA

Part Number	BSPT Male	BSPP Female
MFLM5	M5x0.8	M5x0.8
MFL02	1/8"	1/8"
MFL04	1/4"	1/4"
MFL06	3/8"	3/8"
MFL08	1/2"	1/2"
MFL12	3/4"	3/4"
MFL16	1"	1"
MFL20	1.1/4"	1.1/4"
MFL24	1.1/2"	1.1/2"
MFL32	2"	2"

Equal Elbow BSPT x BSPP Nickel Plated



NP

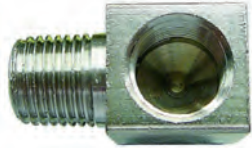
Part Number	BSPT Male	BSPP Female
MFLM5NP	M5x0.8	M5x0.8
MFL02NP	1/8"	1/8"
MFL04NP	1/4"	1/4"
MFL06NP	3/8"	3/8"
MFL08NP	1/2"	1/2"
MFL12NP	3/4"	3/4"
MFL16NP	1"	1"

Compact Elbow BSPT x BSPP



Part Number	BSPT Male	BSPP Female
MFLC02	1/8"	1/8"
MFLC04	1/4"	1/4"
MFLC06	3/8"	3/8"
MFLC08	1/2"	1/2"

Compact Elbow BSPT x BSPP Nickel Plated



Part Number	BSPT Male	BSPP Female
MFLC02NP	1/8"	1/8"
MFLC04NP	1/4"	1/4"
MFLC06NP	3/8"	3/8"
MFLC08NP	1/2"	1/2"

Equal Elbow NPT x NPT



Part Number	NPT Male	NPS Female
MFLN02	1/8"	1/8"
MFLN04	1/4"	1/4"
MFLN06	3/8"	3/8"
MFLN08	1/2"	1/2"
MFLN12	3/4"	3/4"
MFLN16	1"	1"

Equal Elbow Metric/BSPP Female



Part Number	BSPP Female
FELM5	M5 Metric
FEL02	1/8"
FEL04	1/4"
FEL06	3/8"
FEL08	1/2"
FEL12	3/4"
FEL16	1"
FEL20	1.1/4"
FEL24	1.1/2"
FEL32	2"
FEL40	2.1/2"
FEL48	3"
FEL64	4"

Equal Elbow Metric/BSPP Female Nickel Plated



Part Number	BSPP Female
FELM5NP	M5 Metric
FEL02NP	1/8"
FEL04NP	1/4"
FEL06NP	3/8"
FEL08NP	1/2"
FEL12NP	3/4"
FEL16NP	1"

Wall Bracket BSPP Nickel Plated



Part Number	BSPP Female
WALLB08	1/2"

Equal Elbow NPT Female



Part Number	NPS Female
FELN02	1/8"
FELN04	1/4"
FELN06	3/8"
FELN08	1/2"
FELN12	3/4"
FELN16	1"

45 deg Equal Elbow BSPT Male x BSPP Female



Part Number	BSPT Male	BSPP Female
MFL0245	1/8"	1/8"
MFL0445	1/4"	1/4"

45 deg Equal Elbow BSPP Female



Part Number	BSPP Female
FEL0845	1/2"
FEL1245	3/4"
FEL1645	1"
FEL2045	1.1/4"
FEL2445	1.1/2"
FEL3245	2"

Product

Tees

Equal Tee BSPT Male



Part Number	BSPT Male
MET02	1/8"
MET04	1/4"
MET06	3/8"
MET08	1/2"
MET12	3/4"
MET16	1"

Equal Tee BSPT Male Nickel Plated



Part Number	BSPT Male
MET02NP	1/8"
MET04NP	1/4"
MET06NP	3/8"
MET08NP	1/2"
MET12NP	3/4"
MET16NP	1"



We stock a large range of Compression Fittings. Special Fittings can be made to suit your requirements

Tee Male x Male x Female



Part Number	BSPT Male	BSPP Female
MMFT02	1/8"	1/8"
MMFT04	1/4"	1/4"
MMFT06	3/8"	3/8"
MMFT08	1/2"	1/2"
MMFT12	3/4"	3/4"
MMFT16	1"	1"

Tee Male x Male x Female Nickel Plated



NP

Part Number	BSPT Male	BSPP Female
MMFT02NP	1/8"	1/8"
MMFT04NP	1/4"	1/4"
MMFT06NP	3/8"	3/8"
MMFT08NP	1/2"	1/2"
MMFT12NP	3/4"	3/4"
MMFT16NP	1"	1"

Centre Leg Equal Tee Female x Female x Male Nickel Plated



NP

Part Number	BSPT Male	BSPP Female
MFT02NP	1/8"	1/8"
MFT04NP	1/4"	1/4"
MFT06NP	3/8"	3/8"
MFT08NP	1/2"	1/2"
MFT12NP	3/4"	3/4"
MFT16NP	1"	1"

Equal Tee BSPP/Metric Nickel Plated



NP

Part Number	BSPP Female
FETM5NP	M5 Metric
FET02NP	1/8"
FET04NP	1/4"
FET06NP	3/8"
FET08NP	1/2"
FET12NP	3/4"
FET16NP	1"

Tee Male x Female x Male



NPA

Part Number	BSPT Male	BSPP Female
MFMT02	1/8"	1/8"
MFMT04	1/4"	1/4"
MFMT06	3/8"	3/8"
MFMT08	1/2"	1/2"
MFMT12	3/4"	3/4"
MFMT16	1"	1"

Tee Female x Male x Female



NPA

Part Number	BSPT Male	BSPP Female
FMFT02	1/8"	1/8"
FMFT04	1/4"	1/4"
FMFT06	3/8"	3/8"
FMFT08	1/2"	1/2"
FMFT12	3/4"	3/4"
FMFT16	1"	1"

Equal Tee NPT



NPA

Part Number	NPT Female
FETN02	1/8"
FETN04	1/4"
FETN08	1/2"
FETN12	3/4"
FETN16	1"

Tee Male x Female x Male Nickel Plated



NP

Part Number	BSPT Male	BSPP Female
MFMT02NP	1/8"	1/8"
MFMT04NP	1/4"	1/4"
MFMT06NP	3/8"	3/8"
MFMT08NP	1/2"	1/2"
MFMT12NP	3/4"	3/4"
MFMT16NP	1"	1"

Tee Female x Male x Female Nickel Plated



NP

Part Number	BSPT Male	BSPP Female
FMFT02NP	1/8"	1/8"
FMFT04NP	1/4"	1/4"
FMFT06NP	3/8"	3/8"
FMFT08NP	1/2"	1/2"
FMFT12NP	3/4"	3/4"
FMFT16NP	1"	1"

Centre Leg Equal Tee Female x Female x Male



NPA

Part Number	BSPT Male	BSPP Female
MFT02	1/8"	1/8"
MFT04	1/4"	1/4"
MFT06	3/8"	3/8"
MFT08	1/2"	1/2"
MFT12	3/4"	3/4"
MFT16	1"	1"

Equal Tee BSPP/Metric



NPA

Part Number	BSPP Female
FETM5	M5x0.8
FET02	1/8"
FET04	1/4"
FET06	3/8"
FET08	1/2"
FET12	3/4"
FET16	1"
FET20	1.1/4"
FET24	1.1/2"
FET32	2"
FET48	3"
FET64	4"

Equal 'Y' Branch BSPP



NPA

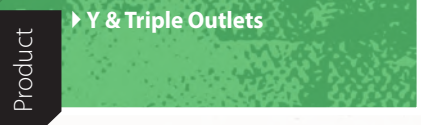
Part Number	BSPP Female
FY02	1/8"
FY04	1/4"
FY06	3/8"
FY08	1/2"

Equal 'Y' Branch BSPP Nickel Plated



NP

Part Number	BSPP Female
FY02NP	1/8"
FY04NP	1/4"
FY06NP	3/8"
FY08NP	1/2"



Product

Y & Triple Outlets

Equal 'Y' Branch BSPT x BSPP



NPA

Part Number	BSPT Male	BSPP Female
MFY02	1/8"	1/8"
MFY04	1/4"	1/4"
MFY06	3/8"	3/8"
MFY08	1/2"	1/2"

Equal 'Y' Branch BSPT x BSPP Nickel Plated



NP

Part Number	BSPT Male	BSPP Female
MFY02NP	1/8"	1/8"
MFY04NP	1/4"	1/4"
MFY06NP	3/8"	3/8"
MFY08NP	1/2"	1/2"

Triple Outlet BSPP



NPA

Part Number	BSPP Female
T006	3/8"

Triple Outlet BSPP Nickel Plated



NP

Part Number	BSPP Female
T006NP	3/8"



Cannot see the size
or style you want?
Please call us

Equal Cross BSPT



NPA

Part Number	BSPT Male
MCX02	1/8"
MCX04	1/4"
MCX06	3/8"
MCX08	1/2"
MCX12	3/4"
MCX16	1"

Equal Cross BSPT Nickel Plated



NP

Part Number	BSPT Male
MCX02NP	1/8"
MCX04NP	1/4"
MCX06NP	3/8"
MCX08NP	1/2"
MCX12NP	3/4"
MCX16NP	1"

Equal Cross BSPT x BSPP



NPA

Part Number	BSPT Male	BSPP Female
MFCX02	1/8"	1/8"
MFCX04	1/4"	1/4"
MFCX06	3/8"	3/8"
MFCX08	1/2"	1/2"
MFCX12	3/4"	3/4"
MFCX16	1"	1"

Equal Cross BSPT x BSPP Nickel Plated



NP

Part Number	BSPT Male	BSPP Female
MFCX02NP	1/8"	1/8"
MFCX04NP	1/4"	1/4"
MFCX06NP	3/8"	3/8"
MFCX08NP	1/2"	1/2"
MFCX12NP	3/4"	3/4"
MFCX16NP	1"	1"

Equal Cross BSPP



NPA

Part Number	BSPP Female
CX02	1/8"
CX04	1/4"
CX06	3/8"
CX08	1/2"
CX16	1"

Equal Cross BSPP Nickel Plated



NP

Part Number	BSPP Female
CX02NP	1/8"
CX04NP	1/4"
CX06NP	3/8"
CX08NP	1/2"
CX12NP	3/4"
CX16NP	1"

Product

Manifolds

Single Sided Manifold Block - Brass



NPA

Part Number	BSPP Female	No. Of Outlet
MB02/02	1/8"	2
MB02/04	1/8"	4
MB02/06	1/8"	6
MB02/08	1/8"	8
MB04/02	1/4"	2
MB04/04	1/4"	4
MB04/06	1/4"	6
MB04/08	1/4"	8
MB04/10	1/4"	10
MB04/12	1/4"	12
MB06/02	3/8"	2
MB06/04	3/8"	4
MB06/06	3/8"	6
MB06/08	3/8"	8
MB08/04	1/2"	4
MB08/06	1/2"	6
MB08/08	1/2"	8
MB12/04	3/4"	4
MB12/06	3/4"	6

Product

Crosses

Un-Equal Manifold Block - Brass



NPA

Part Number	BSPP Female Inlet	BSPP Female Outlet	No. of Outlets
MB04/02/02	1/4"	1/8"	2
MB04/02/04	1/4"	1/8"	4
MB04/02/06	1/4"	1/8"	6
MB04/02/08	1/4"	1/8"	8
MB06/04/04	3/8"	1/4"	4
MB06/04/06	3/8"	1/4"	6
MB06/04/08	3/8"	1/4"	8
MB08/06/04	1/2"	3/8"	4
MB08/06/06	1/2"	3/8"	6
MB12/08/04	3/4"	1/2"	4

Single Sided Manifold - Aluminium



AL

Part Number	BSPP Female Inlet	BSPP Female Outlet	No. Of Outlet
MBAS04/02/02	1/4"	1/8"	2
MBAS04/02/03	1/4"	1/8"	3
MBAS04/02/04	1/4"	1/8"	4
MBAS04/02/05	1/4"	1/8"	5
MBAS04/02/06	1/4"	1/8"	6
MBAS06/04/02	3/8"	1/4"	2
MBAS06/04/03	3/8"	1/4"	3
MBAS06/04/04	3/8"	1/4"	4
MBAS06/04/05	3/8"	1/4"	5
MBAS06/04/06	3/8"	1/4"	6
MBAS08/06/02	1/2"	3/8"	2
MBAS08/06/03	1/2"	3/8"	3
MBAS08/06/04	1/2"	3/8"	4
MBAS08/06/05	1/2"	3/8"	5
MBAS08/06/06	1/2"	3/8"	6

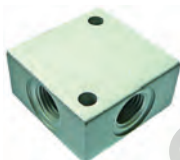
Double Sided Manifold - Aluminium



AL

Part Number	BSPP Female Inlet	BSPP Female Outlet	No. Of Outlet (Each Side)
MBAD04/02/02	1/4"	1/8"	2
MBAD04/02/03	1/4"	1/8"	3
MBAD04/02/04	1/4"	1/8"	4
MBAD04/02/05	1/4"	1/8"	5
MBAD04/02/06	1/4"	1/8"	6
MBAD06/04/02	3/8"	1/4"	2
MBAD06/04/03	3/8"	1/4"	3
MBAD06/04/04	3/8"	1/4"	4
MBAD06/04/05	3/8"	1/4"	5
MBAD06/04/06	3/8"	1/4"	6
MBAD08/06/02	1/2"	3/8"	2
MBAD08/06/03	1/2"	3/8"	3
MBAD08/06/04	1/2"	3/8"	4
MBAD08/06/05	1/2"	3/8"	5
MBAD08/06/06	1/2"	3/8"	6

Manifold / Block Cross



AL

Part Number	BSPP Female
MBA02	1/8"
MBA04	1/4"
MBA06	3/8"
MBA08	1/2"



Acetylene Hose Tail LH Thread



Part Number	Left Hand BSPP Female	Hosetail
GA04/04	1/4"	1/4"
GA06/04	3/8"	1/4"
GA06/05	3/8"	5/16"
GA06/06	3/8"	3/8"

Oxygen Hose Tail RH Thread



Part Number	BSPP Female	Hosetail
G004/04	1/4"	1/4"
G006/04	3/8"	1/4"
G006/05	3/8"	5/16"
G006/06	3/8"	3/8"

Design | Manufacture | Distribution

- Turned components to meet your needs
- Drawing specific
- Material: brass, steel, stainless, aluminium, plastic, nylon and many more
- Heat treatment
- Plating: zinc, nickel, chrome, chemical black, anodizing and many more
- ISO/TS 16949 approved manufacturing facility

